

A close-up photograph of a koala sleeping on a thick, textured tree branch. The koala's grey, fluffy fur is the central focus, with its large, dark, leathery nose and closed eyes clearly visible. Its thick, black-clawed paws are gripping the branch. The background is a soft, out-of-focus green, suggesting a forest environment. A semi-transparent white rectangular box is positioned at the top of the image, and the title text is overlaid on a white gradient in the bottom right corner.

Australia's natural environments

Australia's natural environment

Do you know the names of these 3 types of habitats?

Australia is a big country with many different types of environments, like deserts, bushland, and beaches.

Each of these places has its own characteristics like the weather, plants, and animals.

These things help make a home, called a "habitat," for the animals and plants that live there.



Desert



Bushland or bush



Beach

Australian Animals



Habitat – Desert



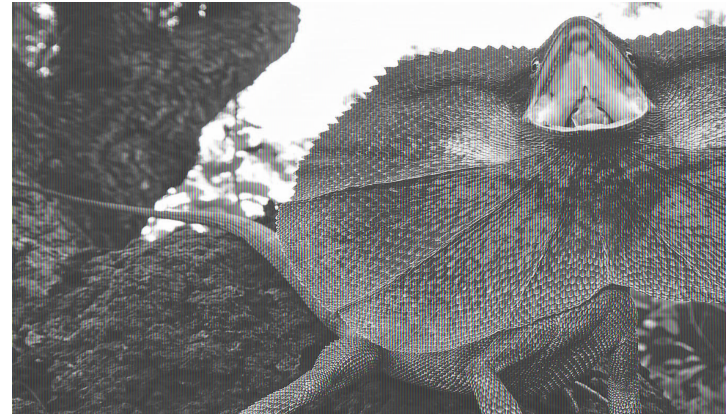
Two-thirds of Australia is made up of deserts.

In these deserts, it gets very hot during the day and very cold at night. There is not a lot of water or trees in desert habitats.

Animals that live in these areas must be able to survive these tough conditions.

For example, the Frill Necked Lizard:

- It has a big frill around its neck to scare away predators.



ULURU – The most famous rock in Australia



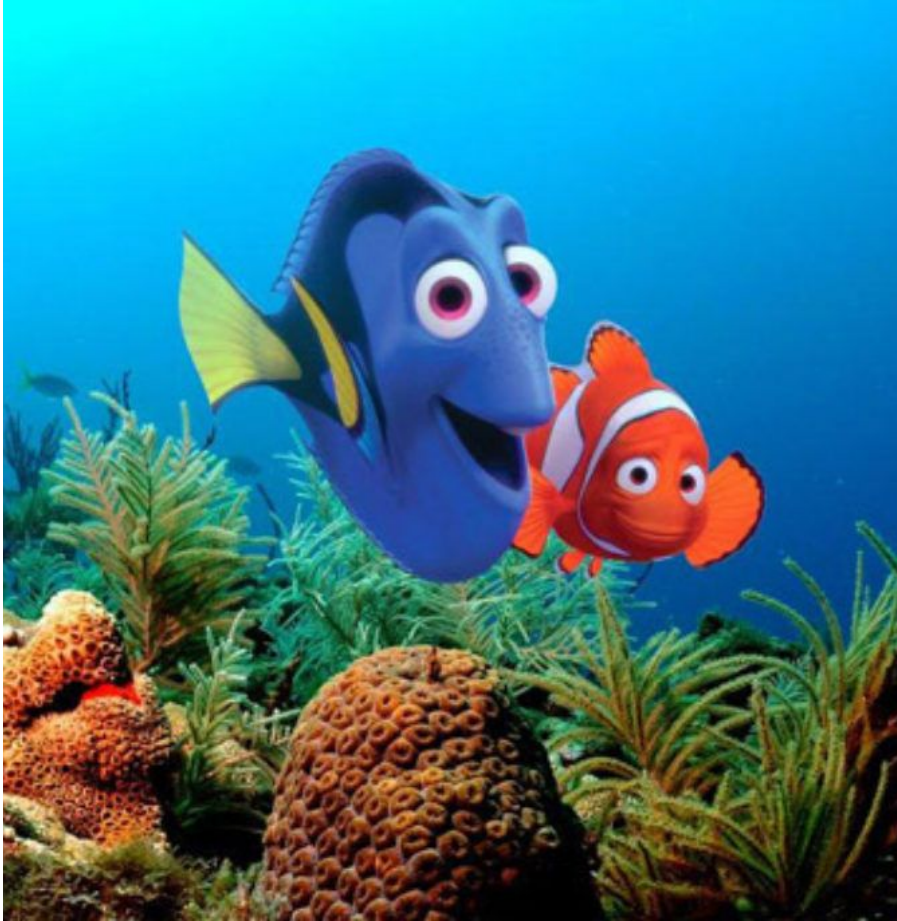
It is 335 meters high, 3.6 kilometers long, and 2.0 kilometers wide.

The distance from here to the Teatro is 1.2 kilometers. That means the length of Uluru is **3x** the distance to the Teatro.

Uluru is very important to the Aboriginal people of Australia.

What habitat is it found in?

Desert



Habitat – Reefs

Australia is home to a unique habitat called coral reefs.

The most famous coral reef is the **Great Barrier Reef** as it is the biggest reef in the world, and it is larger than the country of Italy.

The Great Barrier Reef is one of the 7 Natural Wonders of the World is the setting of the Disney movie, Finding Nemo.

Watch the video to see all the amazing colourful coral and fish that live there! Have you watched this movie?

Habitat – Rainforests

Daintree Rainforest

Australia has the oldest rainforest in the world, called the Daintree Rainforest.

It is home to 663 species of animals, 230 types of butterflies, and over 2,800 different plants. Many of these plants and animals can only be found in the Daintree.

In the Daintree, you can find crocodiles and cassowaries (a large bird).



Habitat -



As Australia is surrounded by the ocean, it has a lot of beaches and animals that live there.

Beaches are habitat for different animals such as

- Birds
- Seals
- Crabs
- Penguins

Phillip Island in Australia is famous for the Penguin colony that comes to the shore every night.

Watch the video to see them!

Habitats – True or False

- 2/3 of Australia is made up of desert environments - TRUE
- The Great Barrier Reef is the location of the movie, Madagascar - FALSE (the movie is Finding Nemo)
- Beaches are habitat for many types of birds - True
- The Daintree Rainforest has many plants and animals that cannot be found anywhere else in the world - True
- The Daintree Rainforest is the youngest rainforest in the world - False



Kangaroos

There are 4 types of kangaroos:

- Red Kangaroo
- Eastern Grey Kangaroo
- Western Grey Kangaroo
- Antilopine Kangaroo

Kangaroos can jump up to 9 meters!

They usually live in bush or grassland habitats, but sometimes they can be found at the beach.

Kangaroos are herbivores, which means they only eat plants. One of their favorite foods is a grass called Kangaroo Grass.

Koala

The koala is a cute animal that lives in trees.

Koalas are nocturnal and sleep for many hours every day

They eat leaves from Eucalyptus trees; therefore their habitat is mostly Eucalypt forests.

Eucalyptus leaves are poisonous to many other animals but doesn't harm the Koala

Eucalyptus trees are native to Australia but can be found here in Villanueva de Cordoba (see the image on the top right).

Koalas are becoming endangered because of tree removal and habitat loss.




Saltwater Crocodiles

They are the largest reptile in the world and can weigh up to 1000kg.

They are carnivores and their habitat needs to have water for them to survive.



QUICK QUIZ



1. TAKE A GUESS
How fast can saltwater crocodiles run?
a) 4km/hr **b) 14km/hr** c) 40km/hr

2. TRUE OR FALSE?
Crocodiles swallow stones to help grind up their food in their stomachs.



3. TAKE A GUESS
How long can crocodiles live for?
a) 20 b) 40 c) 60 **d) 80 years**

4. TRUE OR FALSE?
Saltwater crocodiles can go without eating for long periods of time. A large meal can last them for a few months.

Emu



Emus are the second largest birds in the world, and they can grow up to 2 meters tall.

They can run as fast as 50 km/h, but cannot fly.

Emus live in the desert and bushland, and they are omnivores, which means they eat both plants and animals.

Animals – True or False

- Kangaroos are carnivores
 - Emus cannot fly
 - Kangaroos have a long, strong tail that helps them to jump far
 - Koalas are endangered because of habitat loss
- False, they eat grass
 - True
 - True
 - True

